

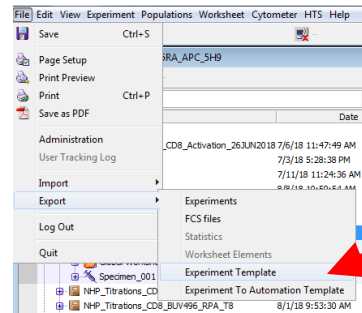
FACS DiVa Template Creation

This is highly recommended for any experiment you expect to do multiple times over a period of longer than a month. The flow core will delete data that is older than a month old including the experiments in Diva. However, we do not delete the experimental templates that are saved as below. **Please note that if you have already calculated compensation in an experiment this will be added to the template.**

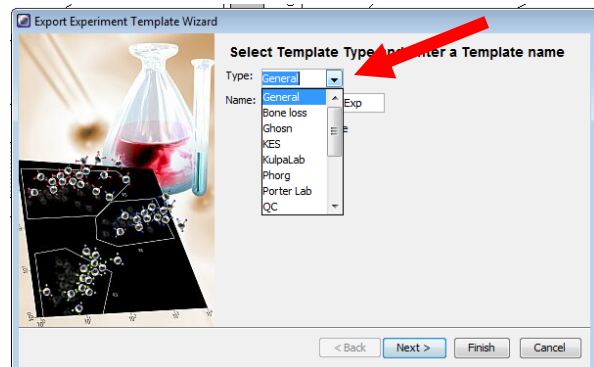
One important aspect of creating a template is when a new DiVa database is installed all experiments will be lost but templates will be retained. The core highly recommends uploading your saved templates to OneDrive as a backup. Templates can be found in the D:\BDEExport\Templates\Experiment\<>your lab name> or General.

Select the templates you want to upload and Right Click Send to ZIP File, once Zipped upload to OneDrive.

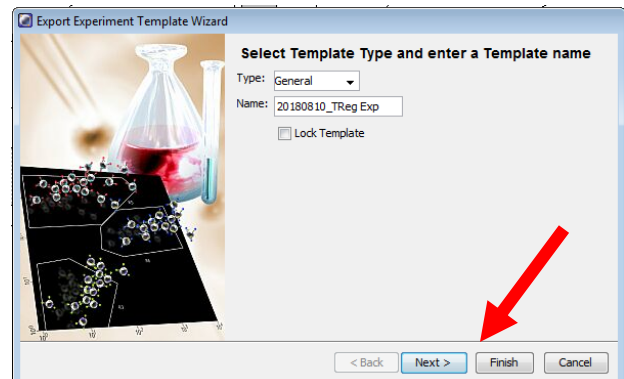
1. Open the experiment you wish to make a template of.
2. Highlight the name of the experiment
3. Click on Export → Experiment Template



4. Either find the tab for your lab in the drop down box, or type in your lab name.



5. Fill in a meaningful name for the experiment.
(We highly recommend adding a date as part of the name)



6. Click Next and add more info about the experiment or click Finish.

Your Experiment template is saved and can be opened by clicking on New Experiment and choosing the template you wish (organized by tab).

