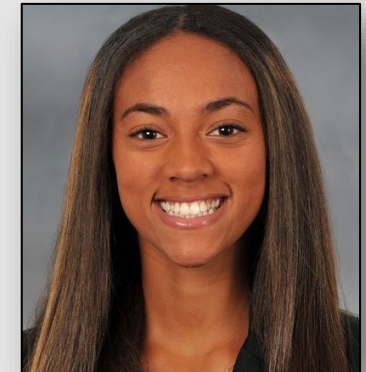




*"In Vitro and In Vivo Microglia-based Systems to Study Pain in Sickle Cell Disease"*

**Yankai Zhang, PhD**  
Assistant Professor



*"Optimization of an Adherent Microfluidic Device for Use in Sickle Cell Disease"*

**Erica Evans, BS**  
Research Assistant

**Date:**

September 6<sup>th</sup>, 2022  
12:30-1:30pm

**Location:**

**Egleston Classrooms 5, 6, & 7  
&  
Zoom**