

Snapshot February 2018

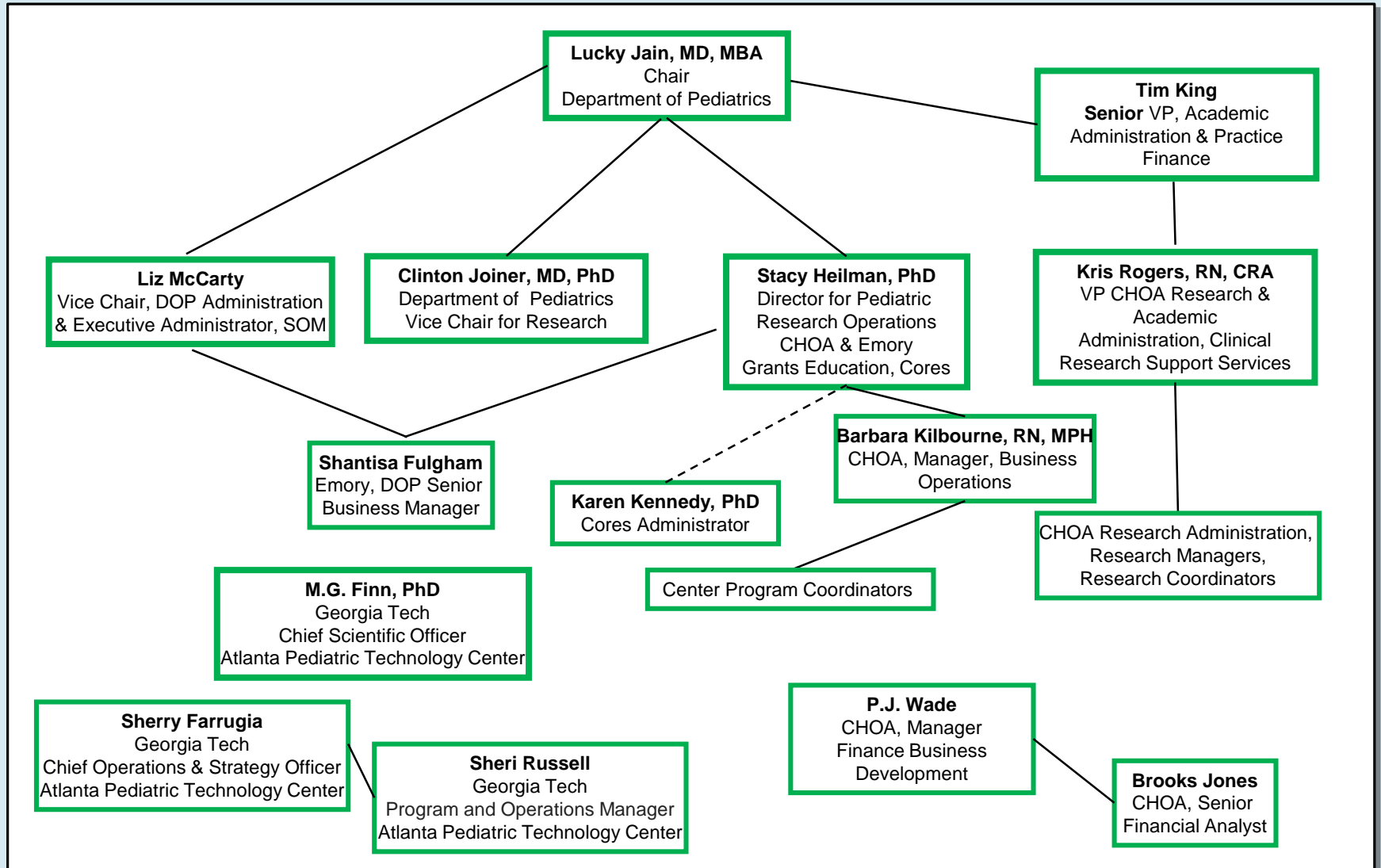
Research Resources:

The resources to the right are available to all investigators affiliated with Children's Healthcare of Atlanta (CHOA), including medical staff, Emory Department of Pediatrics (DOP) faculty and staff, and those outside of the DOP and CHOA who are members of our research centers. We encourage involvement of all those interested in research throughout our system, and provide this as a guide to resources along with our research website www.pedsresearch.org. Our goals are to build infrastructure and programs that serve a broad community of scientists and clinicians engaged in pediatric research, and provide training in grant writing and grant opportunities that enhance our extramural funding for all child health investigators affiliated with Children's Healthcare of Atlanta. For suggestions and comments on any of the initiatives and resources, please contact Clinton H. Joiner, MD, PhD Clinton.joiner@emory.edu or Stacy Heilman, PhD stacy.Heilman@emory.edu

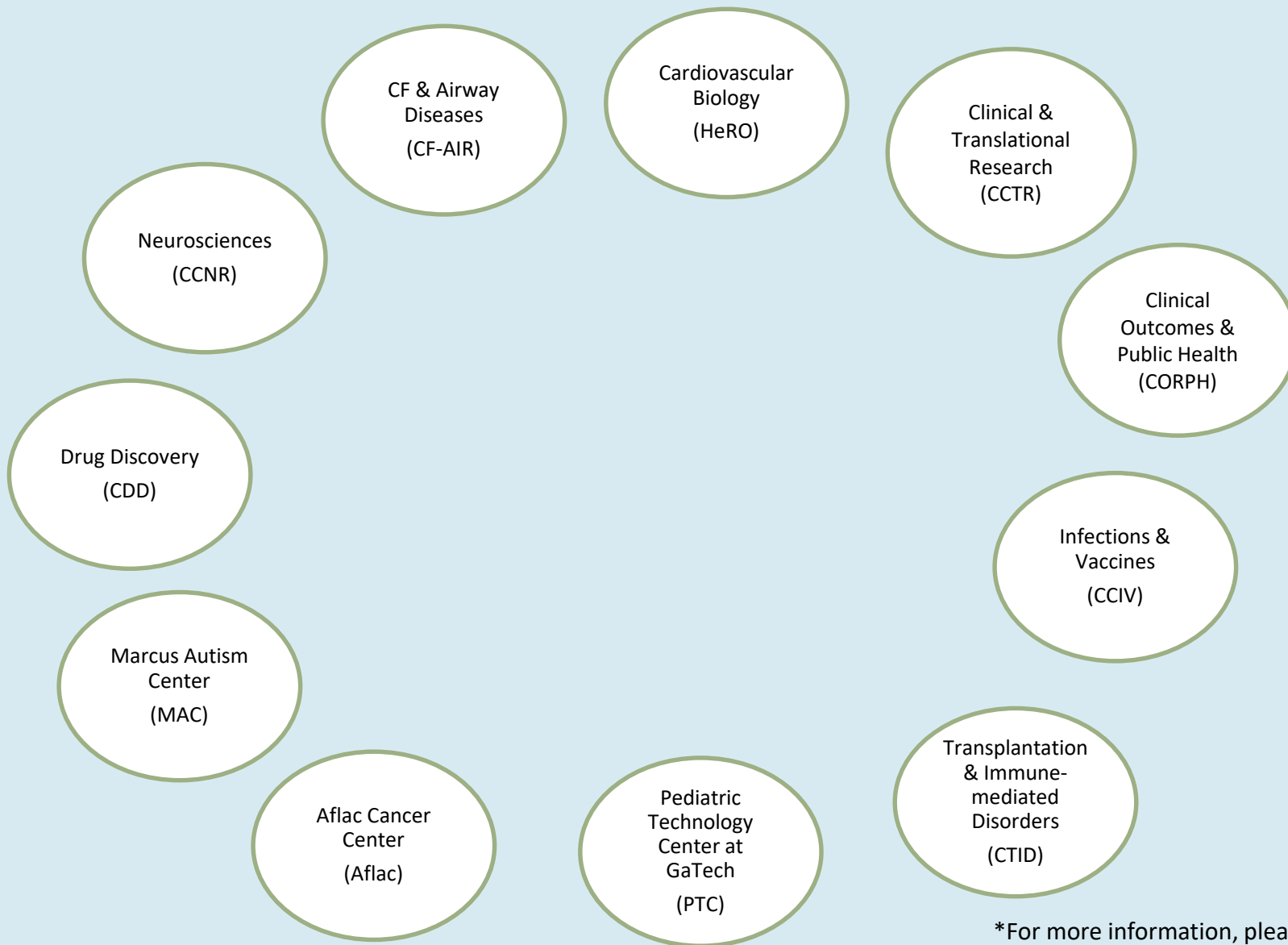
Research Resources

<p>Grant and Manuscript Support</p> <ul style="list-style-type: none"> ➤ Stacy Heilman, PhD Grants Advocate 404-727-4819 stacy.heilman@emory.edu • Assistance with finding grant opportunities and connecting to collaborators • Core laboratory assistance, supervision 	<p>Clinical studies/coordinators</p> <ul style="list-style-type: none"> ➤ CHOA Clinical Research Administration Kris Rogers, RN, CRA, Vice President, 404-785-1215 Kristine.rogers@choa.org ➤ Manager, Egleston campus: Allison Welllons 404-785-6459 Allison.welllons@choa.org ➤ Manager, Hughes Spalding/Scottish Rite campuses: Beena Desai 404-785-2269 beena.desai@choa.org ➤ Nurse Manager, Pediatric Research Unit (PRC/Egleston): Stephanie Meisner, RN Stephanie.Meisner@choa.org 404-785-0400-main number 	<p>Emory Clinical Research Services</p> <ul style="list-style-type: none"> ➤ TBN, Director 404-727-5234 <p>Scientific Facilities Manager</p> <ul style="list-style-type: none"> ➤ Kira Moresco, MS kira.moresco@emory.edu 404-727-6515
<p>Grants & Manuscript Editing</p> <ul style="list-style-type: none"> • Prioritized for extramural funding opportunities, program projects • Experienced at program project management, grant and scientific paper editing • Request form on pedsresearch.org; send to Stacy Heilman 		<p>Equipment Core: Biosafety cabinet, incubators, clinical centrifuge, real-time PCR machine, standard PCR machine, multilabel plate reader, gel documentation system on order</p> <p>Services: This core provides common equipment for investigator's use, including access to benchtop space and hood space, centrifuges for clinical specimen processing</p>
<p>Biostatistics Core</p> <ul style="list-style-type: none"> ➤ Courtney McCracken, PhD <ul style="list-style-type: none"> • Traci Leong, PhD • Leah Bryan, MPH • Janet Figueroa, MPH • Scott Gillespie, MS • Mike Kelleman, MSPH • Curtis Travers, MPH <p>Procedure: Request form located at: http://www.pedsresearch.org/research/cores/biostatistics-core/overview/</p> <p>Priorities: analysis for grant applications and Publications</p>	<p>Pediatric Research Unit (PRC/Egleston) Services— A four-bed outpatient research unit/ A four-bed inpatient research unit/ A core research lab/A research pharmacy/ Bionutrition services/Nursing Services including, but limited to: Medication administration including investigational drugs; I.V. access and port access; I.V. infusions; Routine and complex vital sign monitoring; Phlebotomy; Timed specimen collections such as PK trials and oral glucose tolerance tests; Telemetry monitoring; For more information, please visit: http://www.pedsresearch.org/clinical-research/pediatric-research-center/</p>	<p>Laboratory Specimen Processing: Clinical Laboratory at Egleston and Scottish Rite</p> <ul style="list-style-type: none"> ➤ Heather MacDonald, Manager Advanced Diagnostics Laboratory 404-785-5766 Heather.macdonald@choa.org or labresearchcoordinator@choa.org • Clinical trials specimen processing, shipping, limited storage • ACTSI processing lab • Laboratory inventory management system (LIMS) available

Research Leadership



Pediatric Research Alliance Centers*



*For more information, please see center web pages at pedsresearch.org

Pediatric Research Alliance Center Contacts

Center Directors:

Aflac Cancer and Blood Disorders Center

Center Director: Doug Graham, MD, PhD
douglas.graham@choa.org
Program Coordinator: Molly Green
molly.green@emory.edu

Children's Heart Research and Outcomes Center

Center Director: Mike Davis, PhD
michael.davis@bme.gatech.edu
Program Coordinator: Kristen Herzegh, BA, MPH
kcoshau@emory.edu

Center for Clinical and Translational Research

Center Director: TBN
Program Coordinator: Kristen Herzegh, BA, MPH
kcoshau@emory.edu

Clinical Outcomes Research and Public Health

Center Director: Mehul Raval, MD
mehulvraval@emory.edu
Program Coordinator: Tracy Willoughby
twill02@emory.edu

Center for Cystic Fibrosis & Airways Disease Research

Center Director: Nael McCarty, PhD
namccar@emory.edu
Program Coordinator: Karen Kennedy, PhD
kmurra5@emory.edu

Center for Drug Discovery

Center Director: Baek Kim, PhD
Baek.kim@emory.edu
Program Coordinator: Barbara Kilbourne, RN, MPH
bkilbou@emory.edu

Center for Childhood Infections and Vaccines

Center Director: Bernardo Mainou, PhD
bernardo.mainou@emory.edu
Program Coordinator: Karen Kennedy, PhD
kmurra5@emory.edu

Children's Center for Neurosciences Research

Center Director: TBN
Program Coordinator: Tracy Willoughby
twill02@emory.edu

Center for Transplantation & Immune-mediated Disorders

Center Director: Subra Kugathasan, MD
skugath@emory.edu
Co-Director: Greg Gibson, PhD
greg.gibson@biology.gatech.edu
Program Coordinator: Jennifer Villaseñor
jkenny@emory.edu

Marcus Autism Center

Center Director: Ami Klin, PhD
Director of Research: Warren Jones, PhD
ami.klin@emory.edu or
ami.klin@choa.org and
warren.r.jones@emory.edu
Associate Director of Research, Chris Gunter, PhD
Chris.gunter@emory.edu
Program Coordinator: Christina Wessels
Christina.wessels@choa.org

Pediatric Technology Center

Chief Scientific Officer: MG Finn, PhD
mginfin@gatech.edu
Program and Operations Manager: Sheri Russell
Sheri.Russell@tri.gatech.edu

Research Center Administration:

Lucky Jain, MD, MBA

Richard W Blumberg Professor and Chair
Emory University School of Medicine, Department of Pediatrics, Executive Medical Director & Chief Academic Officer, Children's Healthcare of Atlanta
ljain@emory.edu

Clinton Joiner, MD, PhD

Vice Chair for Research, Emory Department of Pediatrics
clinton.joiner@emory.edu

Stacy S. Heilman, PhD

Director for Research Operations
Director of Programs & Grants Advocate, Department of Pediatrics, Emory University & Children's Healthcare of Atlanta
stacy.heilman@emory.edu

Tim King

Senior Vice President
Academic Administration and Practice Finance
Children's Healthcare of Atlanta
Timothy.King@choa.org

Kris Rogers, RN, CRA

Vice President, Research and Academic Administration
Children's Healthcare of Atlanta
kristine.rogers@choa.org

Liz McCarty

Vice Chair, DOP Administration & Executive Administrator, SOM.
mmccar2@emory.edu

Shantisa Fulgham

Senior Business Manager, Department of Pediatrics, Emory University
sfulgha@emory.edu

Barbara W. Kilbourne, RN, MPH

Manager, Business Operations, Research Strategy Leadership, Children's Healthcare of Atlanta
barbara.kilbourne@choa.org

Pediatric Research Alliance

Locations and Contacts:

Emory Campus/Egleston

Emory-Children's Center (E-CC)

2015 Uppergate Drive
Atlanta, GA 30322



Health Sciences Research Building (HSRB)

1760 Haygood Drive, NE
Atlanta, GA 30322



Egleston hospital

1405 Clifton Road
Atlanta, GA 30322



Director for Research Operations Stacy Heilman, PhD

stacy.Heilman@emory.edu

Manager, Business Operations: Barbara Kilbourne, RN, MPH

barbara.kilbourne@choa.org

Manager, Egleston campus: Allison Wellons allison.wellons@choa.org

Centers:

Aflac Cancer and Blood Disorders Center

Program Coordinator: Molly Green molly.green@emory.edu

Children's Heart Research and Outcomes Center

Program Coordinator: Kristen Herzegh, BA, MPH kcoshau@emory.edu

Children's Center for Clinical and Translational Research

Program Coordinator: Kristen Herzegh, BA, MPH kcoshau@emory.edu

Clinical Outcomes Research & Public Health

Program Coordinator: Tracy Willoughby twillo2@emory.edu

Center for Cystic Fibrosis & Airways Disease Research

Program Coordinator: Karen Kennedy, PhD kmurra5@emory.edu

Center for Drug Discovery

Program Coordinator: Barbara Kilbourne, RN, MPH bkilbou@emory.edu

Center for Childhood Infections and Vaccines

Program Coordinator: Karen Kennedy, PhD kmurra5@emory.edu

Children's Center for Neurosciences Research

Program Coordinator: Tracy Willoughby twillo2@emory.edu

Center for Transplantation & Immune-mediated Disorders

Program Coordinator: Jennifer Villaseñor jkenny@emory.edu

Georgia Institute of Technology

Pediatric Technology Center

Main Contacts:

Chief Scientific Officer: M.G. Finn, PhD mgfinn@gatech.edu

Strategic Partners Officer: Sherry Farrugia sherry.farrugia@gatech.edu

Program and Operations Manager: Sheri Russell

Sheri.Russell@gatech.edu

950 Atlantic Drive, NW

Atlanta, GA 30332



Marcus Autism Center

1920 Briarcliff Road, NE
Atlanta, GA 30329

Associate Professor, Director of
Communications Operations,
Marcus Autism Center, Chris
Gunter, PhD

Chris.gunter@emory.edu

Program Coordinator: Christina

Wessels

Christina.wessels@choa.org



Hughes Spalding Hospital

35 Jesse Hill Jr. Drive SE
Atlanta, GA 30303-3032

Research Coordinator, Saadia Khizer

Saadia.khizer@choa.org



Morehouse School of Medicine

PI: Beatrice Gee, MD, AB, FAAP

bgee@msm.edu

PI: Lily Immergluck, MD, FAAP

Limmergluck@msm.edu



Scottish Rite Hospital*

1001 Johnson Ferry Road NE
Atlanta, GA 30342-1605

Director, Center for Clinical and Translational
Research: TBD

Program Coordinator: Kristen Herzegh, BA,

MPH kcoshau@emory.edu

Manager, SR Campus: Beena Desai

Beena.desai@choa.org



*Research Office located in the Medical Library on the Ground Floor

Research-sponsored events/meetings:

(This is an overview, for specific dates/events, go to: <http://www.pedsresearch.org/calendar>)

MONDAYS	TUESDAYS	WEDNESDAYS	THURSDAYS	FRIDAYS	VARIOUS DAYS
<p>Research Operations Council (ROC) meetings: occurs monthly at HSRB, E360. Designed for central team to discuss detailed operations and issues. For more information, contact Stacy Heilman stacy.Heilman@emory.edu</p>		<p>Research Brainstorming Sessions: Help as needed to allow development and exploration of special research topics. For suggested topic nominations, contact Stacy.heilman@emory.edu</p>		<p>PerCS: 10 AM coffee social every 1st and 3rd Friday, usually held 3rd floor break area, E-CC</p>	<p>Research Advisory Council (RAC) meetings: once monthly; restricted to RAC membership, contact Clint Joiner, MD, PhD for inquiries or suggestions Clinton.joiner@emory.edu</p>
<p>K club: Monthly discussions/lectures for K award training, other grants training/education. Typically 2nd Monday, September to May, Contact Stacy Heilman Stacy.heilman@emory.edu for more information. <i>Sponsored by Departments of Pediatrics and Medicine and ACTSI and CFAR</i></p>		<p>Research Grand Rounds: 3rd Wednesday of month, Egleston, 7:30 AM Contact Barbara Kilbourne barbara.kilbourne@choa.org</p>		<p>Research Seminars: Fridays (Egleston Classrooms). Contact Barbara Kilbourne for suggestions or needs barbara.kilbourne@choa.org</p>	<p>Invited speakers through seminar series sponsored by centers; contact Center Directors or Barbara Kilbourne at barbara.kilbourne@choa.org if interested in upcoming events. Center Directors are listed on pedsresearch.org website.</p>

Specialized Research Equipment/Service Cores:

CORE	SCIENTIFIC DIRECTOR	TECHNICAL DIRECTOR/ CONTACT	EQUIPMENT	LOCATION	SERVICES
Animal Physiology Core	Josh Maxwell, PhD joshua.t.maxwell@emory.edu	Ming Shen mshen@emory.edu	<ul style="list-style-type: none"> • Small animal ventilator • Cautery • Temperature monitoring • Anesthesia system • Dissecting microscope • Visualsonics Vevo 2100 High Frequency Ultrasound* 	Emory-Children's Center, 2 nd Floor Lab	This core is a centralized resource specializing in survival surgery for rats and mice in addition to assistance with other USDA regulated animals such as rabbits, guinea pigs and piglets. The core director assists all investigators with development of IACUC protocols. Surgical services currently offered by the Core include pulmonary banding in rat and neonatal rabbit, aortic banding, myocardial infarction 5/6th nephrectomy for chronic kidney disease, liver-ischemia reperfusion and ultrasound guided injection ideally suited for targeted drug or cell therapy delivery. The Core also has available for use a Visualsonics Vevo 2100 High Frequency Ultrasound system that allows high resolution small animal ultrasound examinations for noninvasive measurement of in vivo structure and function. The Core Technical Director has been extensively trained in ultrasound techniques with many years' experience thereby increasing reliability and reproducibility of imaging data. Studies can either be conducted in an assisted fashion or investigators can reserve the equipment and utilize their own laboratory personnel.
Biomarkers Core	Lou Ann Brown, PhD lou.ann.brown@emory.edu 404-727-5739	Frank Harris fharris@emory.edu	Agilent gas chromatography/mass spectrometer and Waters high performance HPLC with fluorescence detector	Emory-Children's Center, 3 rd Floor Lab	This cores analyzes markers of oxidative stress and markers of alcohol exposure. Speak to Scientific Director about other chromatography/mass spec assays available.
Cardiovascular Imaging Core (CIRC)	Ritu Sachdeva, MD sachdevar@kidsheart.com 404-785-CIRC	Joan Lipinski, RDCS, RDMS joan.Lipinski@choa.org	<ul style="list-style-type: none"> -Echocardiograms - Flow Doppler -3-D Imaging -Upright Bicycle -VO2 Analysis -Electrocardiogram -Cardiac MRI 	Outpatient Cardiac Services, 2 nd Floor, Tower 1	This core provides non-invasive cardiac support for investigators involved in clinical research involving infants, children and adolescents. The CIRC has dedicated space, equipment and staff to provide you with quality cardiovascular imaging data that is collected in a meticulous, systematic, detail-orientated manner. Because of our unique set-up, we are able to utilize state-of-the-art imaging modalities not typically seen in the clinical setting.
Flow Cytometry/Cell Sorting	David Archer darcher@emory.edu	Technical Director for Core: Aaron Rae aaron.j.rae@emory.edu Immunology services are overseen by Bridget Neary bridget.e.neary@emory.edu	<ul style="list-style-type: none"> • BD FACS Canto II Flow Cytometer - Lab E-362, HSRB • BD LSRII Flow Cytometer - Lab E-362, HSRB • BD LSRII Flow Cytometer - Lab E-362, HSRB • BD FACS Aria II Cell Sorter - Lab E-362A, HSRB • Imagestream X Mark II - Lab E-362, HSRB • Luminex 100 Analyzer - Lab E-362, HSRB • CTL-ImmunoSpot-S6 Micro Analyzer (ELISPOT Reader) - E-480, HSRB 	Health Sciences Research Building, E362	This core offers access to several state of the art analytical flow cytometers and Luminex as well as high-speed cell sorting. We also offer training as well as expert help to enable our users to improve the quality and scope of their research. The facility provides flow cytometric analyzers and Luminex for the following applications: Immunophenotyping <ul style="list-style-type: none"> • Cell Cycle • Ploidy • Mitochondrial Potential • Apoptosis • PhosFlow • Live/Dead • Cell Proliferation • Oxidative Burst • Cytokine levels in serum and plasma • Gene and protein expression in cells and body fluids

Specialized Research Equipment/Service Cores (continued)

CORE	SCIENTIFIC DIRECTOR	TECHNICAL DIRECTOR/ CONTACT	EQUIPMENT	LOCATION	SERVICES
Medical Imaging Resources	<p>Radiologists at Children's are board certified with additional training in pediatric imaging and are available for consultation upon request.</p> <p>This operation also includes physicists with imaging expertise and other staff experts.</p>	<p>Nadja Kadom nadja.kadom@emory.edu</p>	<ul style="list-style-type: none"> • Access to clinical CT (4), PET (1), Bone Densitometry (2), Fluoroscopy (8), Nuclear Medicine (4), Ultrasound (9) and X-ray. • Access to 6 clinical MRI scanners including a 1.0T intraoperative, 1.5T and 3T systems. • Access to 2 fMRI systems. • Sedation Services • Access to radiology investigators specializing in radiology, neuroradiology and interventional radiology. • Access to MRI physicists (3). • Access to research professionals including administrators and research coordinators. • Administrative services including scheduling, archival of images 		<p>We provide a cross-disciplinary scientific, administrative, and educational home for imaging science through the Emory Center for Systems Imaging (CSI) and the Pediatric Imaging Research Core (PIRC) at Children's Healthcare of Atlanta.</p> <p>Inpatient Imaging Resources</p> <p>Outpatient Imaging Resources</p>
Children's Clinical & Translational Discovery Core	<p>Chris Porter, MD chris.porter@emory.edu</p>	<p>Bradley Hanberry, PhD bradley.hanberry@emory.edu</p>	<p>Freezers (-80, LN2)</p>	<p>Health Sciences Research Building, E264</p>	<p>New Biological Samples</p> <ul style="list-style-type: none"> • Collection • Processing • Storage in a variety of storage media and freezers, including liquid nitrogen and -80 degree freezers. Monitoring systems ensure 24/7 specimen integrity. • Distribution - Specimens are tracked electronically via the Nautilus LIMS System. <p>Samples Available for Withdrawal</p> <ul style="list-style-type: none"> • PBMCs, plasma, whole blood, DNA, and urine from pediatric patients with immune-mediated disorders, solid organ transplant recipients and/or patients with end-stage organ disease who are awaiting organ transplant • Blood and urine from living kidney donors and healthy controls with renal diagnoses of rejection, stable function or viremia • Clinical data also can be made available upon request.

Partnership Cores

CORE	SCIENTIFIC DIRECTORS	EQUIPMENT	LOCATION	SERVICES
<u>Integrated Cell Imaging Core</u>	Adam Marcus, PhD Director, ICI aimarcu@emory.edu Alexa Mattheyses, PhD Associate Director, ICI mattheyses@emory.edu Neil Anthony, PhD neil.anthony@emory.edu 404-969-CORE April Reedy April.reedy@emory.edu	The rates for the microscopes included in this effort can be found at: http://www.cores.emory.edu/ici/documents/ICI%20Fees-Pediatrics%2020171.pdf . Pediatric researchers will benefit from a 40% subsidy when using any of the ICI equipment and technologies. ICI also provides expert consultation, training, and assistance on all technologies. More information on the microscopes and services available, locations, and how to become a user is available at http://www.cores.emory.edu/eigc/	A partnership facilitated by the Emory School of Medicine and includes the Pediatric Research Alliance Cellular Imaging Core along with other cellular imaging sites on campus including Winship Cancer Institute, Emory NINDS Neuroscience Core Facilities (ENNCF), and the Department of Physiology	This core provides training and access to advanced cellular imaging systems, including confocal and TIRF microscopy. For more information: http://www.pedsresearch.org/research/cores/integrated-cellular-imaging-core/overview/
<u>Genetics/ Genomics Core Resources</u>	<p>The Emory Integrated Genomics Core (EIGC): Michael Zwick, PhD mzwick@emory.edu or EIGC@emory.edu</p> <p>Emory Genetics Laboratory (EGL): dohginfo@emory.edu or domglab@emory.edu</p>	<p>The EIGC is a full-service genomics and computational facility offering Emory researchers the ability to use the latest technologies and methods of analysis in their research. We offer next-generation sequencing, high density microarray services, targeted enrichment, single nucleotide polymorphism (SNP) genotyping, and cutting-edge computational services built around our custom Galaxy server and Emory University's high performance computing and storage infrastructure. Please go to this link to learn more: Emory Integrated Genomics Core.</p> <p>Emory Genetics Laboratory (EGL) is a “one-stop shop” for genetic testing. Its molecular genetics, biochemical genetics, and cytogenetics laboratories are fully integrated and offer one of the most comprehensive test menus available – more than 900 genetic tests are available for clinicians and researchers. As part of Emory University School of Medicine, EGL remains on the forefront of the latest technologies, including exome sequencing, next generation sequencing, whole genomic and targeted microarrays, and more. ABMG-accredited laboratory directors and NSGC-certified laboratory genetic counselors are available to all ordering clinicians and researchers. For more information, please visit Emory Genetics Laboratory.</p>		

Funding Opportunities:

Funding Opportunity	Funding Limit	Funding Term	Deadline	Eligibility	Post Award Expectations	Additional Information
Friends	\$25,000	12-18 months	Usually once annually	<ol style="list-style-type: none"> 1. Children's professional staff who do not also have a compensated faculty appointment 2. Must be for clinical or outcomes research taking place in Children's facilities 	<ol style="list-style-type: none"> 1. Must provide annual and final reports. 2. Must be willing to present findings to Friends groups, Children's leadership, etc. 	http://www.pedsresearch.org/research/resources/funding/pilot-grant-programs
Research Center Pilot Grants (including Emory & GA Tech based centers)	\$50,000 (some GA Tech are \$60K)	12 months	Usually mid-winter; Emory-based are due roughly every other year and GA Tech-based offered every year	<ol style="list-style-type: none"> 1. Must include a member of the center and/or member of Children's medical staff 2. GA Tech Pediatric Technology Center (PTC)--must also include member of GA Tech faculty 	<ol style="list-style-type: none"> 1. Must provide annual report specifying related publications, grant applications submitted and extramural funding received. 2. Must apply for extramural funding within one year of project conclusion date. 	http://www.pedsresearch.org/research/resources/funding/pilot-grant-programs

Funding Opportunities (continued):

Funding Opportunity	Funding Limit	Funding Term	Deadline	Eligibility	Post Award Expectations	Additional Information
Quick Wins	varies	12-24 months	ongoing	<ol style="list-style-type: none"> 1. Project proposals must be submitted by teams comprised of individuals from each organization, Children's and Georgia Tech. 2. The proposals must address a project that provides an answer to an unmet business or clinical need as identified by a clinician, technologist, or Children's leader. 	The project must be capable of delivering a workable solution (at minimum a validated "prototype") into the hands of a clinician or team within 18 months from the receipt of funds and project start.	https://pediatriconnect.gtri.gatech.edu/grants#link-quick-wins-menu-item

Additional Resources:

Research listserv:

Contact barbara.kilbourne@choa.org to be added to this listserv used to disseminate all pediatric research related announcements including seminars, funding opportunities, such as the [BiRD \(Bringing in Research Dollars\)](#), and the Weekly PREP (*Pediatric Research Events and Programs*).

Website:

www.pedsresearch.org

This is the central resource for research seminar info, contacts, cores, calendars, and forms.

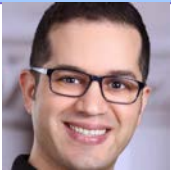



Emory Library Resources

- <http://www.healthlibrary.emory.edu/>
- Ask a librarian:
<http://health.library.emory.edu/about/contact/ask.php>



Scottish Rite and Egleston Library Resources

- [Emily Lawson](#)
Clinical Information Librarian, Inman Medical Library at Children's at Egleston
404-785-1481
- [Kate Daniels](#)
Clinical Information Librarian at Scottish Rite
404-785-2157
- If you have access to [Careforce](#) — use the following link:
<http://careforceconnection/Departments/HumanResources/Learning%20Services/LibrarServices/Pages/Home.aspx>
- If you do not have access to Careforce -- use the following link: <https://www.choa.org/medical-professionals/physician-resources/medical-libraries>

Research Recruitment Update*:

NAME	PHOTO	CENTER	TITLE	START DATE	RECRUITED FROM	RESEARCH INTERESTS
Vahid Serpooshan, PhD		Children's Heart Research and Outcomes Center	Assistant Professor	February 2018	Stanford University	MAIN RESEARCH INTERESTS / ACTIVITIES <ul style="list-style-type: none"> Cardiovascular cellular and molecular biology Bioengineering approaches to heart development and repair 3D (bio)Printing-based heart, bone, and liver tissue engineering Design of smart nano-bio materials
James L. Klosky, PhD, ABPP		Aflac Cancer and Blood Disorders Center	Aflac Director of Psychology	January 2018	St. Jude Children's Research Hospital	National reputation in psychologic research and clinical services related to cancer survivorship, late effects, and fertility preservation
Edwin M. Horwitz, MD, PhD		Aflac Cancer and Blood Disorders Center	Acting Professor	January 2018	Nationwide Children's Hospital	Translational research in mesenchymal stromal cells in GVHD
Stefan G. Sarafianos, PhD		Center for Drug Discovery	Acting Professor	September 2017	University of Missouri	Research Interests <ul style="list-style-type: none"> Biophysics Cancer Biology HIV/ AIDS Molecular Evolution RNA Biology Structural Biology Biochemistry Virology

Research Recruitment Update*:

NAME	PHOTO	CENTER	TITLE	START DATE	RECRUITED FROM	RESEARCH INTERESTS
Joshua Chandler, PhD		Center for Cystic Fibrosis and Airways Disease Research (CF-AIR)	Assistant Professor	August 2017	Emory University	My research focuses on the diverging roles of oxidants generated during airway inflammation, particularly from neutrophils, and how shifts in the abundance of one oxidant at the expense of others drive changes in biological and health outcomes (such as altered epithelial cell signaling and improved patient lung function). I call this approach, which is complementary to but different from antioxidant intervention, "oxidant switching". Using clinical, animal, cellular and biochemical methods, I seek to identify redox-selective targets to promote resolution of inflammation and healthy lung tissue behavior. My major disease focus is cystic fibrosis (CF), in which excessive neutrophils in the airways heavily contribute to disease progression. However, I believe my research will also benefit patients with other inflammatory lung diseases, such as COPD and asthma, by identifying and targeting central redox-mediated pathways of resolving inflammation through oxidant switching.
Amy Y. Tang, MD		Aflac Cancer and Blood Disorders Center	Assistant Professor	July 2017	Columbia University, NY, NY	Dr. Tang is interested in iron overload and chelation therapy in sickle cell disease and will initially join an ongoing industry-funded study of oral deferasirox in chronically transfused thalassemia patients. In addition to sickle cell patients, many other transfusion-dependent patients with hematological disorders, marrow failure syndromes, cancer, and bone marrow transplant are affected by iron overload and require chelation. Development of new approaches to transfusion, such as erythrocytapheresis, hold promise for improving transfusion outcomes and reducing iron overload. Dr. Tang also has research experience in basic science studies of RBC alloimmunization, and will contribute to ongoing clinical and translational studies here in that area.

Research Recruitment Update*:

NAME	PHOTO	CENTER	TITLE	START DATE	RECRUITED FROM	RESEARCH INTERESTS
Dan Wechsler, MD, PhD		Aflac Cancer and Blood Disorders Center	Professor, Director of Oncology	July 2017	Duke University Medical Center	<p>Areas of Research Interest:</p> <ul style="list-style-type: none"> • Molecular Biology of Neuroblastoma • Regulation of Transcription of MYC family proteins • Role of Endocytosis in Pathogenesis of Acute Myeloid Leukemia • Pathogenesis of MLL-dependent Acute Leukemia • Nuclear Export Signals in Leukemogenesis
Jocelyn Grunwell, MD		Center for Cystic Fibrosis and Airways Disease Research (CF-AIR)	Assistant Professor	July 2017	Emory University	<p>I am interested in the role of AM immune phenotype, oxidative stress, cellular energy metabolism in pediatric acute lung injury. Understanding the mechanisms that underlie AM phenotype will hopefully allow us to modulate the immune system, the antioxidant enzymatic response system, and energy metabolism in critically ill children.</p>