

# Snapshot November 2017

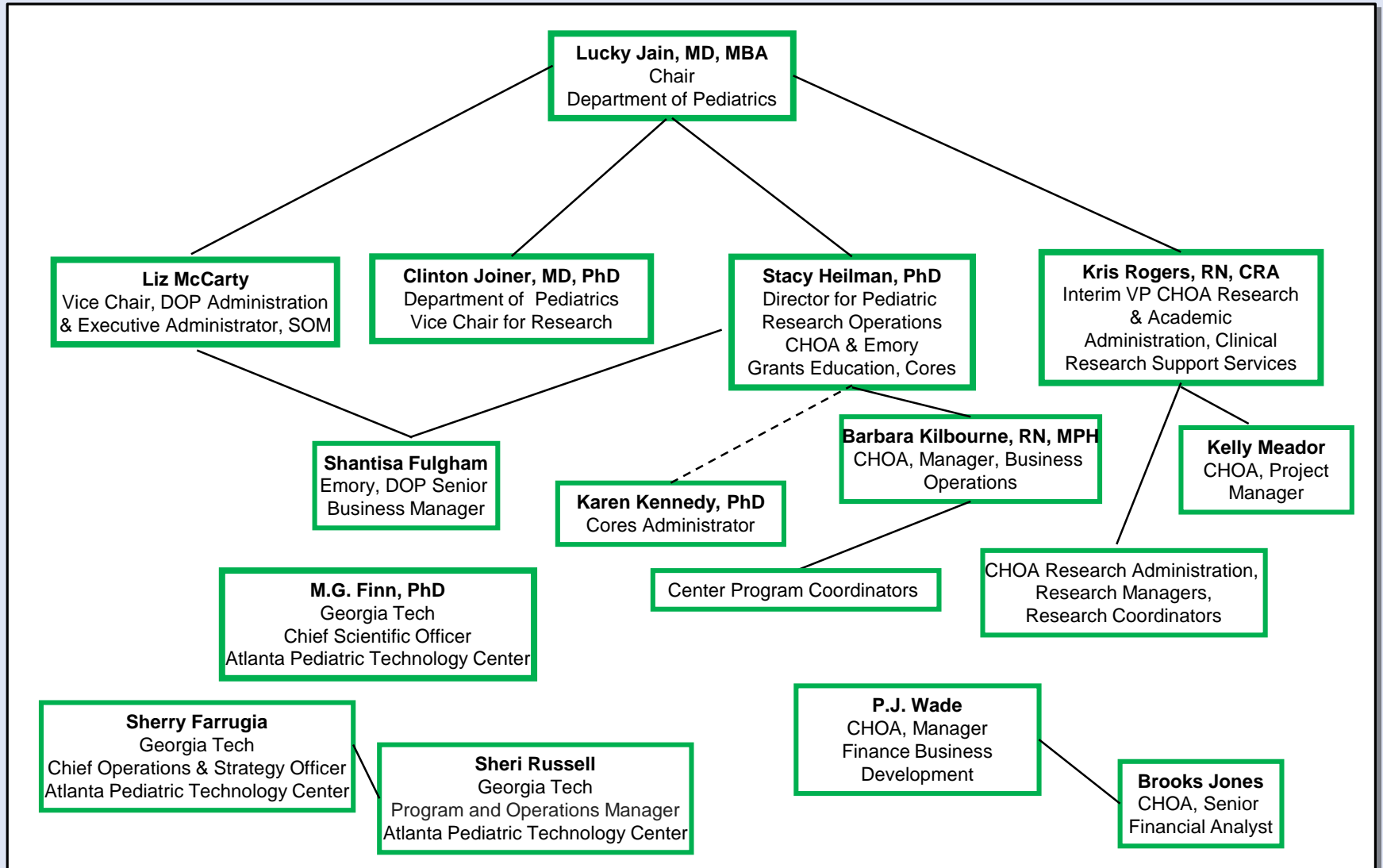
## Research Resources:

The resources to the right are available to all investigators affiliated with Children's Healthcare of Atlanta (CHOA), including medical staff, Emory Department of Pediatrics (DOP) faculty and staff, and those outside of the DOP and CHOA who are members of our research centers. We encourage involvement of all those interested in research throughout our system, and provide this as a guide to resources along with our research website [www.pedsresearch.org](http://www.pedsresearch.org). Our goals are to build infrastructure and programs that serve a broad community of scientists and clinicians engaged in pediatric research, and provide training in grant writing and grant opportunities that enhance our extramural funding for all child health investigators affiliated with Children's Healthcare of Atlanta. For suggestions and comments on any of the initiatives and resources, please contact Clinton H. Joiner, MD, PhD [Clinton.joiner@emory.edu](mailto:Clinton.joiner@emory.edu) or Stacy Heilman, PhD [stacy.Heilman@emory.edu](mailto:stacy.Heilman@emory.edu)

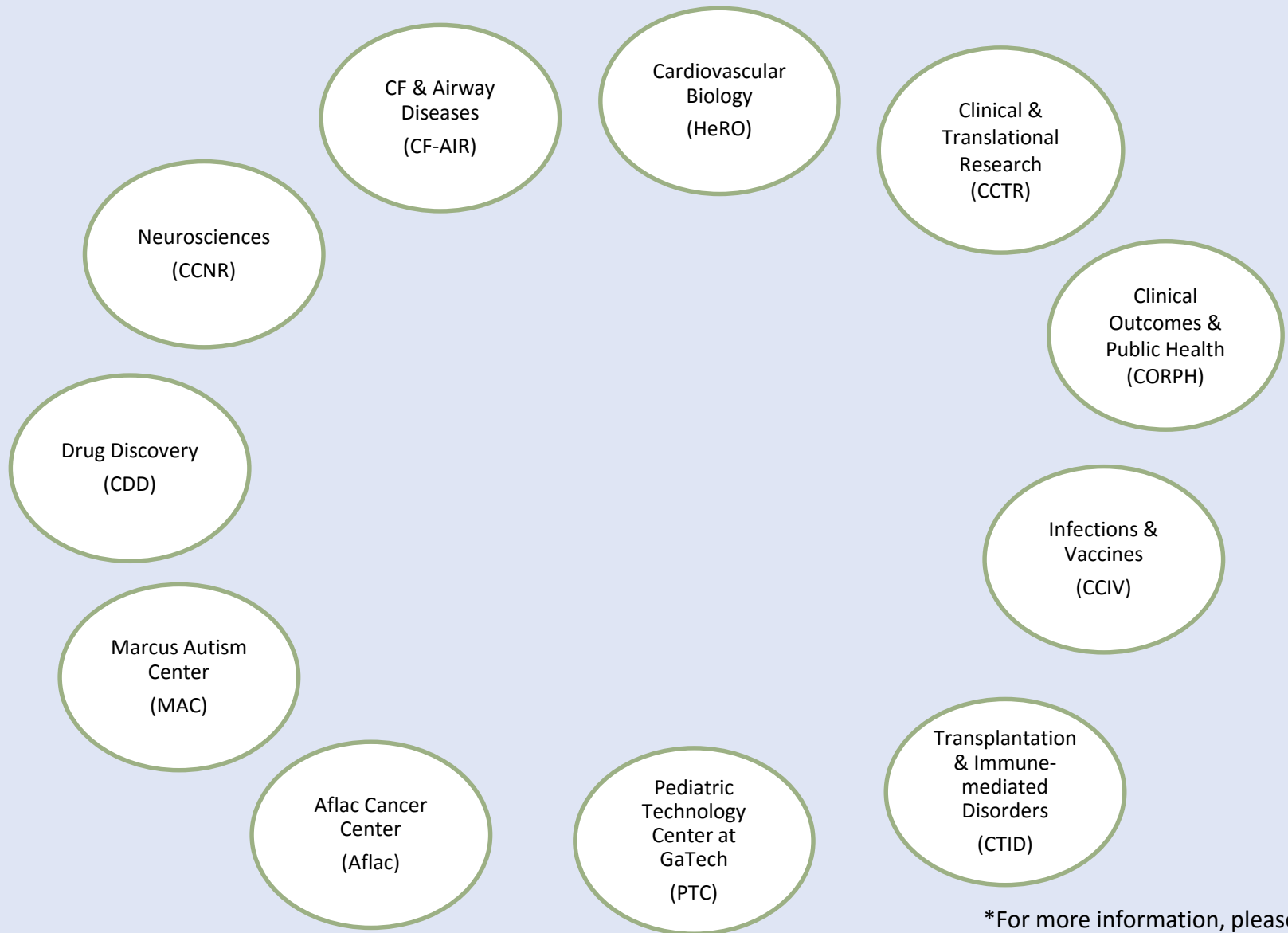
Research Resources

<p><b>Grant and Manuscript Support</b></p> <ul style="list-style-type: none"> <li>➤ Stacy Heilman, PhD Grants Advocate 404-727-4819 <a href="mailto:stacy.heilman@emory.edu">stacy.heilman@emory.edu</a></li> <li>• Assistance with finding grant opportunities and connecting to collaborators</li> <li>• Core laboratory assistance, supervision</li> </ul>	<p><b>Clinical studies/coordinators</b></p> <ul style="list-style-type: none"> <li>➤ <b>CHOA Clinical Research Administration</b> Kris Rogers, RN, CRA, Director 404-785-1215 <a href="mailto:Kristine.rogers@choa.org">Kristine.rogers@choa.org</a></li> <li>➤ <b>Manager, Egleston campus:</b> Allison Welllons 404-785-6459 <a href="mailto:Allison.welllons@choa.org">Allison.welllons@choa.org</a></li> </ul>	<p><b>Emory Clinical Research Services</b></p> <ul style="list-style-type: none"> <li>➤ TBN, Director 404-727-5234</li> </ul> <p><b>Scientific Facilities Manager</b></p> <ul style="list-style-type: none"> <li>➤ Kira Moresco, MS <a href="mailto:kira.moresco@emory.edu">kira.moresco@emory.edu</a> 404-727-6515</li> </ul>
<p><b>Grants &amp; Manuscript Editing</b></p> <ul style="list-style-type: none"> <li>• Prioritized for extramural funding opportunities, program projects</li> <li>• Experienced at program project management, grant and scientific paper editing</li> <li>• Request form on <a href="http://pedsresearch.org">pedsresearch.org</a>; send to Stacy Heilman</li> </ul>	<ul style="list-style-type: none"> <li>➤ <b>Manager, Hughes Spalding/Scottish Rite campuses:</b> Beena Desai 404-785-2269 <a href="mailto:beena.desai@choa.org">beena.desai@choa.org</a></li> <li>➤ <b>Nurse Manager, Pediatric Research Unit (PRC/Egleston):</b> Stephanie Meisner, RN <a href="mailto:Stephanie.Meisner@choa.org">Stephanie.Meisner@choa.org</a> 404-785-0400-main number</li> </ul>	<p><b>Equipment Core:</b> Biosafety cabinet, incubators, clinical centrifuge, real-time PCR machine, standard PCR machine, multilabel plate reader, gel documentation system on order</p> <p><b>Services:</b> This core provides common equipment for investigator's use, including access to benchtop space and hood space, centrifuges for clinical specimen processing</p>
<p><b>Biostatistics Core</b></p> <ul style="list-style-type: none"> <li>➤ Courtney McCracken, PhD             <ul style="list-style-type: none"> <li>• Traci Leong, PhD</li> <li>• Leah Bryan, MPH</li> <li>• Janet Figueroa, MPH</li> <li>• Scott Gillespie, MS</li> <li>• Mike Kelleman, MSPH</li> <li>• Curtis Travers, MPH</li> </ul> </li> </ul> <p>Procedure: Request form located at: <a href="http://www.pedsresearch.org/research/cores/biostatistics-core/overview/">http://www.pedsresearch.org/research/cores/biostatistics-core/overview/</a></p> <p>Priorities: analysis for grant applications and Publications</p>	<p><b>Pediatric Research Unit (PRC/Egleston) Services—</b> A four-bed outpatient research unit/ A four-bed inpatient research unit/ A core research lab/A research pharmacy/ Bionutrition services/Nursing Services including, but limited to: Medication administration including investigational drugs; I.V. access and port access; I.V. infusions; Routine and complex vital sign monitoring; Phlebotomy; Timed specimen collections such as PK trials and oral glucose tolerance tests; Telemetry monitoring; For more information, please visit: <a href="http://www.pedsresearch.org/clinical-research/pediatric-research-center/">http://www.pedsresearch.org/clinical-research/pediatric-research-center/</a></p>	<p><b>Laboratory Specimen Processing:</b> Clinical Laboratory at Egleston and Scottish Rite</p> <ul style="list-style-type: none"> <li>➤ Heather MacDonald, Manager Advanced Diagnostics Laboratory 404-785-5766 <a href="mailto:Heather.macdonald@choa.org">Heather.macdonald@choa.org</a> or <a href="mailto:labresearchcoordinator@choa.org">labresearchcoordinator@choa.org</a></li> <li>• Clinical trials specimen processing, shipping, limited storage</li> <li>• ACTSI processing lab</li> <li>• Laboratory inventory management system (LIMS) available</li> </ul>

# Research Leadership



# Pediatric Research Alliance Centers\*



\*For more information, please see center web pages at [pedsresearch.org](http://pedsresearch.org)

# Pediatric Research Alliance Center Contacts

## Center Directors:

### **Aflac Cancer and Blood Disorders Center**

**Center Director: Doug Graham, MD, PhD**  
[douglas.graham@choa.org](mailto:douglas.graham@choa.org)  
Program Coordinator: Molly Green  
[molly.green@emory.edu](mailto:molly.green@emory.edu)

### **Children's Heart Research and Outcomes Center**

**Center Director: Mike Davis, PhD**  
[michael.davis@bme.gatech.edu](mailto:michael.davis@bme.gatech.edu)  
Program Coordinator: Kristen Herzegh, BA, MPH  
[kcoshau@emory.edu](mailto:kcoshau@emory.edu)

### **Center for Clinical and Translational Research**

**Center Director: TBD**  
Program Coordinator: Kristen Herzegh, BA, MPH  
[kcoshau@emory.edu](mailto:kcoshau@emory.edu)

### **Clinical Outcomes Research and Public Health**

**Center Director: Mehul Raval, MD**  
[mehulvraval@emory.edu](mailto:mehulvraval@emory.edu)  
Program Coordinator: Tracy Willoughby  
[twillo2@emory.edu](mailto:twillo2@emory.edu)

### **Center for Cystic Fibrosis & Airways Disease Research**

**Center Director: Nael McCarty, PhD**  
[namccar@emory.edu](mailto:namccar@emory.edu)  
Program Coordinator: Karen Kennedy, PhD  
[kmurra5@emory.edu](mailto:kmurra5@emory.edu)

### **Center for Drug Discovery**

**Center Director: Baek Kim, PhD**  
[Baek.kim@emory.edu](mailto:Baek.kim@emory.edu)  
Program Coordinator: Barbara Kilbourne, RN, MPH  
[bkilbou@emory.edu](mailto:bkilbou@emory.edu)

### **Center for Childhood Infections and Vaccines**

**Center Director: Marty Moore, PhD**  
[Martin.moore@emory.edu](mailto:Martin.moore@emory.edu)  
Program Coordinator: Karen Kennedy, PhD  
[kmurra5@emory.edu](mailto:kmurra5@emory.edu)

### **Children's Center for Neurosciences Research**

**Center Director: Ton deGrauw, MD, PhD**  
[ton.degrauw@choa.org](mailto:ton.degrauw@choa.org)  
**Research Director: Alex Kuan, MD, PhD**  
[alex.kuan@emory.edu](mailto:alex.kuan@emory.edu)  
Program Coordinator: Tracy Willoughby  
[twillo2@emory.edu](mailto:twillo2@emory.edu)

### **Center for Transplantation & Immune-mediated Disorders**

**Center Director: Subra Kugathasan, MD**  
[skugath@emory.edu](mailto:skugath@emory.edu)  
Program Coordinator: Jennifer Villaseñor  
[jkenny@emory.edu](mailto:jkenny@emory.edu)

### **Marcus Autism Center**

**Center Director: Ami Klin, PhD**  
**Director of Research: Warren Jones, PhD**  
[ami.klin@emory.edu](mailto:ami.klin@emory.edu) or  
[ami.klin@choa.org](mailto:ami.klin@choa.org) and  
[warren.r.jones@emory.edu](mailto:warren.r.jones@emory.edu)

### **Associate Director of Research, Chris Gunter, PhD**

[Chris.gunter@emory.edu](mailto:Chris.gunter@emory.edu)  
Program Coordinator: Christina Wessels  
[Christina.wessels@choa.org](mailto:Christina.wessels@choa.org)

### **Pediatric Technology Center**

**Chief Scientific Officer: MG Finn, PhD**  
[mginfin@gatech.edu](mailto:mginfin@gatech.edu)  
Program and Operations Manager: Sheri Russell  
[Sheri.Russell@tri.gatech.edu](mailto:Sheri.Russell@tri.gatech.edu)

## Research Center Administration:

### **Lucky Jain, M.D., MBA**

Richard W Blumberg Professor and Chair  
Emory University School of Medicine, Department of Pediatrics, Executive Medical Director & Chief Academic Officer, Children's Healthcare of Atlanta  
[ljain@emory.edu](mailto:ljain@emory.edu)

### **Clinton Joiner, MD, PhD**

Vice Chair for Research, Emory Department of Pediatrics  
[clinton.joiner@emory.edu](mailto:clinton.joiner@emory.edu)

### **Stacy S. Heilman, PhD**

Co-Director for Research  
Director of Programs & Grants Advocate, Department of Pediatrics, Emory University & Children's Healthcare of Atlanta  
[stacy.heilman@emory.edu](mailto:stacy.heilman@emory.edu)

### **Kris Rogers, RN, CRA**

Interim VP for Research  
Director of Research Administration & Graduate Medical Education, Children's Healthcare of Atlanta  
[kristine.rogers@choa.org](mailto:kristine.rogers@choa.org)

### **Liz McCarty**

Vice Chair, DOP Administration & Executive Administrator, SOM.  
[mmccar2@emory.edu](mailto:mmccar2@emory.edu)

### **Shantisa Fulgham**

Senior Business Manager, Department of Pediatrics, Emory University  
[sfulgha@emory.edu](mailto:sfulgha@emory.edu)

### **Barbara W. Kilbourne, RN, MPH**

Manager, Business Operations, Research Strategy Leadership, Children's Healthcare of Atlanta  
[barbara.kilbourne@choa.org](mailto:barbara.kilbourne@choa.org)

# Pediatric Research Alliance

## Locations and Contacts:

### Emory Campus/Egleston

#### Emory-Children's Center (E-CC)

2015 Uppergate Drive  
Atlanta, GA 30322



#### Health Sciences Research Building (HSRB)

1760 Haygood Drive, NE  
Atlanta, GA 30322



#### Egleston hospital

1405 Clifton Road  
Atlanta, GA 30322



**Director for Research Operations** Stacy Heilman, PhD

[stacy.Heilman@emory.edu](mailto:stacy.Heilman@emory.edu)

**Manager, Business Operations:** Barbara Kilbourne, RN, MPH

[barbara.kilbourne@choa.org](mailto:barbara.kilbourne@choa.org)

**Manager, Egleston campus:** Allison Wellons [allison.wellons@choa.org](mailto:allison.wellons@choa.org)

#### Centers:

##### Aflac Cancer and Blood Disorders Center

Program Coordinator: Molly Green [molly.green@emory.edu](mailto:molly.green@emory.edu)

##### Children's Heart Research and Outcomes Center

Program Coordinator: Kristen Herzegh, BA, MPH [kcoshau@emory.edu](mailto:kcoshau@emory.edu)

##### Children's Center for Clinical and Translational Research

Program Coordinator: Kristen Herzegh, BA, MPH [kcoshau@emory.edu](mailto:kcoshau@emory.edu)

##### Clinical Outcomes Research & Public Health

Program Coordinator: Tracy Willoughby [twillo2@emory.edu](mailto:twillo2@emory.edu)

##### Center for Cystic Fibrosis & Airways Disease Research

Program Coordinator: Karen Kennedy, PhD [kmurra5@emory.edu](mailto:kmurra5@emory.edu)

##### Center for Drug Discovery

Program Coordinator: Barbara Kilbourne, RN, MPH [bkilbou@emory.edu](mailto:bkilbou@emory.edu)

##### Center for Childhood Infections and Vaccines

Program Coordinator: Karen Kennedy, PhD [kmurra5@emory.edu](mailto:kmurra5@emory.edu)

##### Children's Center for Neurosciences Research

Program Coordinator: Tracy Willoughby [twillo2@emory.edu](mailto:twillo2@emory.edu)

##### Center for Transplantation & Immune-mediated Disorders

Program Coordinator: Jennifer Villaseñor [jkenny@emory.edu](mailto:jkenny@emory.edu)

### Georgia Institute of Technology

#### Pediatric Technology Center

##### Main Contacts:

Chief Scientific Officer: M.G. Finn, PhD [mgfinn@gatech.edu](mailto:mgfinn@gatech.edu)

Strategic Partners Officer: Sherry Farrugia [sherry.farrugia@gatech.edu](mailto:sherry.farrugia@gatech.edu)

Program and Operations Manager: Sheri Russell

[Sheri.Russell@gatech.edu](mailto:Sheri.Russell@gatech.edu)

950 Atlantic Drive, NW

Atlanta, GA 30332



### Marcus Autism Center

1920 Briarcliff Road, NE  
Atlanta, GA 30329

Associate Professor, Director of  
Communications Operations,  
Marcus Autism Center, Chris  
Gunter, PhD

[Chris.gunter@emory.edu](mailto:Chris.gunter@emory.edu)

Program Coordinator: Christina

Wessels

[Christina.wessels@choa.org](mailto:Christina.wessels@choa.org)



### Hughes Spalding Hospital

35 Jesse Hill Jr. Drive SE  
Atlanta, GA 30303-3032

Research Coordinator, Saadia Khizer

[Saadia.khizer@choa.org](mailto:Saadia.khizer@choa.org)



### Morehouse School of Medicine

PI: Beatrice Gee, MD, AB, FAAP

[bgee@msm.edu](mailto:bgee@msm.edu)

PI: Lily Immergluck, MD, FAAP

[Limmergluck@msm.edu](mailto:Limmergluck@msm.edu)



### Scottish Rite Hospital\*

1001 Johnson Ferry Road NE  
Atlanta, GA 30342-1605

Director, Center for Clinical and Translational  
Research: TBD

Program Coordinator: Kristen Herzegh, BA,

MPH [kcoshau@emory.edu](mailto:kcoshau@emory.edu)

Manager, SR Campus: Beena Desai

[Beena.desai@choa.org](mailto:Beena.desai@choa.org)



\*Research Office located in the Medical Library on the Ground Floor

# Research-sponsored events/meetings:

(This is an overview, for specific dates/events, go to: <http://www.pedsresearch.org/calendar> )

MONDAYS	TUESDAYS	WEDNESDAYS	THURSDAYS	FRIDAYS	VARIOUS DAYS
<p>Research Operations Council (ROC) meetings: occurs every other week at HSRB, E360. Designed for central team to discuss detailed operations and issues. For more information, contact Stacy Heilman <a href="mailto:stacy.Heilman@emory.edu">stacy.Heilman@emory.edu</a></p>		<p>Research Brainstorming Sessions: Help as needed to allow development and exploration of special research topics. For suggested topic nominations, contact <a href="mailto:Stacy.heilman@emory.edu">Stacy.heilman@emory.edu</a></p>		<p>PerCS: 10 AM coffee social every 1<sup>st</sup> and 3<sup>rd</sup> Friday, usually held 3<sup>rd</sup> floor break area, E-CC</p>	<p>Research Advisory Council (RAC) meetings: once monthly; restricted to RAC membership, contact Clint Joiner, MD, PhD for inquiries or suggestions <a href="mailto:Clinton.joiner@emory.edu">Clinton.joiner@emory.edu</a></p>
<p>K club: Monthly discussions/lectures for K award training, other grants training/education. Typically 2<sup>nd</sup> Monday, September to May, Contact Stacy Heilman <a href="mailto:Stacy.heilman@emory.edu">Stacy.heilman@emory.edu</a> for more information. <i>Sponsored by Departments of Pediatrics and Medicine and ACTSI and CFAR</i></p>		<p>Research Grand Rounds: 3<sup>rd</sup> Wednesday of month, Egleston, 7:30 AM Contact Barbara Kilbourne <a href="mailto:barbara.kilbourne@choa.org">barbara.kilbourne@choa.org</a></p>		<p>Research Seminars: Fridays (Egleston Classrooms). Contact Barbara Kilbourne for suggestions or needs <a href="mailto:barbara.kilbourne@choa.org">barbara.kilbourne@choa.org</a></p>	<p>Invited speakers through seminar series sponsored by centers; contact Center Directors or Barbara Kilbourne at <a href="mailto:barbara.kilbourne@choa.org">barbara.kilbourne@choa.org</a> if interested in upcoming events. Center Directors are listed on <a href="http://pedsresearch.org">pedsresearch.org</a> website.</p>

# Specialized Research Equipment/Service Cores:

CORE	SCIENTIFIC DIRECTOR	TECHNICAL DIRECTOR/ CONTACT	EQUIPMENT	LOCATION	SERVICES
<a href="#">Animal Physiology Core</a>	Josh Maxwell, PhD <a href="mailto:joshua.t.maxwell@emory.edu">joshua.t.maxwell@emory.edu</a>	Ming Shen <a href="mailto:mshen@emory.edu">mshen@emory.edu</a>	<ul style="list-style-type: none"> <li>• Small animal ventilator</li> <li>• Cautery</li> <li>• Temperature monitoring</li> <li>• Anesthesia system</li> <li>• Dissecting microscope</li> <li>• Visualsonics Vevo 2100 High Frequency Ultrasound*</li> </ul>	Emory-Children's Center, 2 <sup>nd</sup> Floor Lab	This core is a centralized resource specializing in survival surgery for rats and mice in addition to assistance with other USDA regulated animals such as rabbits, guinea pigs and piglets. The core director assists all investigators with development of IACUC protocols. Surgical services currently offered by the Core include pulmonary banding in rat and neonatal rabbit, aortic banding, myocardial infarction 5/6th nephrectomy for chronic kidney disease, liver-ischemia reperfusion and ultrasound guided injection ideally suited for targeted drug or cell therapy delivery. The Core also has available for use a Visualsonics Vevo 2100 High Frequency Ultrasound system that allows high resolution small animal ultrasound examinations for noninvasive measurement of in vivo structure and function. The Core Technical Director has been extensively trained in ultrasound techniques with many years' experience thereby increasing reliability and reproducibility of imaging data. Studies can either be conducted in an assisted fashion or investigators can reserve the equipment and utilize their own laboratory personnel.
<a href="#">Biomarkers Core</a>	Lou Ann Brown, PhD <a href="mailto:lou.ann.brown@emory.edu">lou.ann.brown@emory.edu</a> 404-727-5739	Frank Harris <a href="mailto:fharris@emory.edu">fharris@emory.edu</a>	Agilent gas chromatography/mass spectrometer and Waters high performance HPLC with fluorescence detector	Emory-Children's Center, 3 <sup>rd</sup> Floor Lab	This cores analyzes markers of oxidative stress and markers of alcohol exposure. Speak to Scientific Director about other chromatography/mass spec assays available.
<a href="#">Cardiovascular Imaging Core (CIRC)</a>	Ritu Sachdeva, MD <a href="mailto:sachdevar@kidsheart.com">sachdevar@kidsheart.com</a> 404-785-CIRC	Joan Lipinski, RDCS, RDMS <a href="mailto:joan.Lipinski@choa.org">joan.Lipinski@choa.org</a>	<ul style="list-style-type: none"> <li>-Echocardiograms</li> <li>- Flow Doppler</li> <li>-3-D Imaging</li> <li>-Upright Bicycle</li> <li>-VO2 Analysis</li> <li>-Electrocardiogram</li> <li>-Cardiac MRI</li> </ul>	Outpatient Cardiac Services, 2 <sup>nd</sup> Floor, Tower 1	This core provides non-invasive cardiac support for investigators involved in clinical research involving infants, children and adolescents. The CIRC has dedicated space, equipment and staff to provide you with quality cardiovascular imaging data that is collected in a meticulous, systematic, detail-orientated manner. Because of our unique set-up, we are able to utilize state-of-the-art imaging modalities not typically seen in the clinical setting.
<a href="#">Flow Cytometry/Cell Sorting</a>	David Archer <a href="mailto:darcher@emory.edu">darcher@emory.edu</a>	Technical Director for Core: Aaron Rae <a href="mailto:aaron.j.rae@emory.edu">aaron.j.rae@emory.edu</a>  Immunology services are overseen by Bridget Neary <a href="mailto:bridget.e.neary@emory.edu">bridget.e.neary@emory.edu</a>	<ul style="list-style-type: none"> <li>• BD FACS Canto II Flow Cytometer - Lab E-362, HSRB</li> <li>• BD LSRII Flow Cytometer - Lab E-362, HSRB</li> <li>• BD LSRII Flow Cytometer - Lab E-362, HSRB</li> <li>• BD FACS Aria II Cell Sorter - Lab E-362A, HSRB</li> <li>• Imagestream X Mark II - Lab E-362, HSRB</li> <li>• Luminex 100 Analyzer - Lab E-362, HSRB</li> <li>• CTL-ImmunoSpot-S6 Micro Analyzer (ELISPOT Reader) - E-480, HSRB</li> </ul>	Health Sciences Research Building, E362	This core offers access to several state of the art analytical flow cytometers and Luminex as well as high-speed cell sorting. We also offer training as well as expert help to enable our users to improve the quality and scope of their research. The facility provides flow cytometric analyzers and Luminex for the following applications: Immunophenotyping <ul style="list-style-type: none"> <li>• Cell Cycle</li> <li>• Ploidy</li> <li>• Mitochondrial Potential</li> <li>• Apoptosis</li> <li>• PhosFlow</li> <li>• Live/Dead</li> <li>• Cell Proliferation</li> <li>• Oxidative Burst</li> <li>• Cytokine leveins in serum and plasma</li> <li>• Gene and protein expression in cells and body fluids</li> </ul>

# Specialized Research Equipment/Service Cores (continued)

CORE	SCIENTIFIC DIRECTOR	TECHNICAL DIRECTOR/ CONTACT	EQUIPMENT	LOCATION	SERVICES
<a href="#">Medical Imaging Resources</a>	<p><a href="#">Radiologists</a> at Children's are board certified with additional training in pediatric imaging and are available for consultation upon request.</p> <p>This operation also includes physicists with imaging expertise and other staff experts.</p>		<ul style="list-style-type: none"> <li>• Access to clinical CT (4), PET (1), Bone Densitometry (2), Fluoroscopy (8), Nuclear Medicine (4), Ultrasound (9) and X-ray.</li> <li>• Access to 6 clinical MRI scanners including a 1.0T intraoperative, 1.5T and 3T systems.</li> <li>• Access to 2 fMRI systems.</li> <li>• Sedation Services</li> <li>• Access to radiology investigators specializing in radiology, neuroradiology and interventional radiology.</li> <li>• Access to MRI physicists (3).</li> <li>• Access to research professionals including administrators and research coordinators.</li> <li>• Administrative services including scheduling, archival of images</li> </ul>		<p>We provide a cross-disciplinary scientific, administrative, and educational home for imaging science through the Emory Center for Systems Imaging (CSI) and the Pediatric Imaging Research Core (PIRC) at Children's Healthcare of Atlanta.</p> <p><a href="#">Inpatient Imaging Resources</a></p> <p><a href="#">Outpatient Imaging Resources</a></p>
<a href="#">Children's Clinical &amp; Translational Discovery Core</a>	<p>Chris Porter, MD <a href="mailto:chris.porter@emory.edu">chris.porter@emory.edu</a></p>	<p>Bradley Hanberry, PhD <a href="mailto:bradley.hanberry@emory.edu">bradley.hanberry@emory.edu</a></p>	<p>Freezers (-80, LN2)</p>	<p>Health Sciences Research Building, E264</p>	<p>New Biological Samples</p> <ul style="list-style-type: none"> <li>• Collection</li> <li>• Processing</li> <li>• Storage in a variety of storage media and freezers, including liquid nitrogen and -80 degree freezers. Monitoring systems ensure 24/7 specimen integrity.</li> <li>• Distribution - Specimens are tracked electronically via the Nautilus LIMS System.</li> </ul> <p>Samples Available for Withdrawal</p> <ul style="list-style-type: none"> <li>• PBMCs, plasma, whole blood, DNA, and urine from pediatric patients with immune-mediated disorders, solid organ transplant recipients and/or patients with end-stage organ disease who are awaiting organ transplant</li> <li>• Blood and urine from living kidney donors and healthy controls with renal diagnoses of rejection, stable function or viremia</li> <li>• Clinical data also can be made available upon request.</li> </ul>



# Partnership Cores

CORE	SCIENTIFIC DIRECTORS	EQUIPMENT	LOCATION	SERVICES
<a href="#"><u>Integrated Cell Imaging Core</u></a>	<p>Adam Marcus, PhD Director, ICI <a href="mailto:aimarcu@emory.edu">aimarcu@emory.edu</a></p> <p>Alexa Mattheyses, PhD Associate Director, ICI <a href="mailto:mattheyses@emory.edu">mattheyses@emory.edu</a></p> <p>Neil Anthony, PhD <a href="mailto:neil.anthony@emory.edu">neil.anthony@emory.edu</a> 404-969-CORE</p>	<p>The rates for the microscopes included in this effort can be found at: <a href="http://www.cores.emory.edu/ici/documents/ICI%20Fees-Pediatrics%2020171.pdf">http://www.cores.emory.edu/ici/documents/ICI%20Fees-Pediatrics%2020171.pdf</a>.</p> <p>Pediatric researchers will benefit from a 40% subsidy when using any of the ICI equipment and technologies. ICI also provides expert consultation, training, and assistance on all technologies. More information on the microscopes and services available, locations, and how to become a user is available at <a href="http://www.cores.emory.edu/eigc/">http://www.cores.emory.edu/eigc/</a></p>	<p>A partnership facilitated by the Emory School of Medicine and includes the Pediatric Research Alliance Cellular Imaging Core along with other cellular imaging sites on campus including Winship Cancer Institute, Emory NINDS Neuroscience Core Facilities (ENNCF), and the Department of Physiology</p>	<p>This core provides training and access to advanced cellular imaging systems, including confocal and TIRF microscopy. For more information: <a href="http://www.pedsresearch.org/research/cores/integrated-cellular-imaging-core/overview/">http://www.pedsresearch.org/research/cores/integrated-cellular-imaging-core/overview/</a></p>
<a href="#"><u>Genetics/ Genomics Core Resources</u></a>	<p><b>The Emory Integrated Genomics Core (EIGC):</b> Michael Zwick, PhD <a href="mailto:mzwick@emory.edu">mzwick@emory.edu</a> or <a href="mailto:EIGC@emory.edu">EIGC@emory.edu</a></p>	<p>The EIGC is a full-service genomics and computational facility offering Emory researchers the ability to use the latest technologies and methods of analysis in their research. We offer next-generation sequencing, high density microarray services, targeted enrichment, single nucleotide polymorphism (SNP) genotyping, and cutting-edge computational services built around our custom Galaxy server and Emory University's high performance computing and storage infrastructure. Please go to this link to learn more: <a href="#">Emory Integrated Genomics Core</a>.</p>		
	<p><b>Emory Genetics Laboratory (EGL):</b> <a href="mailto:dohginfo@emory.edu">dohginfo@emory.edu</a> or <a href="mailto:domglab@emory.edu">domglab@emory.edu</a></p>	<p>Emory Genetics Laboratory (EGL) is a “one-stop shop” for genetic testing. Its molecular genetics, biochemical genetics, and cytogenetics laboratories are fully integrated and offer one of the most comprehensive test menus available – more than 900 genetic tests are available for clinicians and researchers. As part of Emory University School of Medicine, EGL remains on the forefront of the latest technologies, including exome sequencing, next generation sequencing, whole genomic and targeted microarrays, and more. ABMG-accredited laboratory directors and NSGC-certified laboratory genetic counselors are available to all ordering clinicians and researchers. For more information, please visit <a href="#">Emory Genetics Laboratory</a>.</p>		

# Funding Opportunities:

Funding Opportunity	Funding Limit	Funding Term	Deadline	Eligibility	Post Award Expectations	Additional Information
<b>Friends</b>	\$25,000	12-18 months	Usually once annually	<ol style="list-style-type: none"> <li>1. Children's professional staff who do not also have a compensated faculty appointment</li> <li>2. Must be for clinical or outcomes research taking place in Children's facilities</li> </ol>	<ol style="list-style-type: none"> <li>1. Must provide annual and final reports.</li> <li>2. Must be willing to present findings to Friends groups, Children's leadership, etc.</li> </ol>	<a href="http://www.pedsresearch.org/research/resources/funding/pilot-grant-programs">http://www.pedsresearch.org/research/resources/funding/pilot-grant-programs</a>
<b>Research Center Pilot Grants (including Emory &amp; GA Tech based centers)</b>	\$50,000 (some GA Tech are \$60K)	12 months	Usually mid-winter; Emory-based are due roughly every other year and GA Tech-based offered every year	<ol style="list-style-type: none"> <li>1. Must include a member of the center and/or member of Children's medical staff</li> <li>2. GA Tech Pediatric Technology Center (PTC)--must also include member of GA Tech faculty</li> </ol>	<ol style="list-style-type: none"> <li>1. Must provide annual report specifying related publications, grant applications submitted and extramural funding received.</li> <li>2. Must apply for extramural funding within one year of project conclusion date.</li> </ol>	<a href="http://www.pedsresearch.org/research/resources/funding/pilot-grant-programs">http://www.pedsresearch.org/research/resources/funding/pilot-grant-programs</a>

## Funding Opportunities (continued):

Funding Opportunity	Funding Limit	Funding Term	Deadline	Eligibility	Post Award Expectations	Additional Information
<b>Quick Wins</b>	varies	12-24 months	ongoing	<ol style="list-style-type: none"> <li>1. Project proposals must be submitted by teams comprised of individuals from each organization, Children's and Georgia Tech.</li> <li>2. The proposals must address a project that provides an answer to an unmet business or clinical need as identified by a clinician, technologist, or Children's leader.</li> </ol>	The project must be capable of delivering a workable solution (at minimum a validated "prototype") into the hands of a clinician or team within 18 months from the receipt of funds and project start.	<a href="https://pediatriconnect.gtri.gatech.edu/grants#link-quick-wins-menu-item">https://pediatriconnect.gtri.gatech.edu/grants#link-quick-wins-menu-item</a>

# Additional Resources:

## Research listserv:

Contact [barbara.kilbourne@choa.org](mailto:barbara.kilbourne@choa.org) to be added to this listserv used to disseminate all pediatric research related announcements including seminars, funding opportunities, such as the [BiRD \(Bringing in Research Dollars\)](#), and the Weekly PREP (*Pediatric Research Events and Programs*).

## Website:

[www.pedsresearch.org](http://www.pedsresearch.org)

This is the central resource for research seminar info, contacts, cores, calendars, and forms.



## Emory Library Resources

- <http://www.healthlibrary.emory.edu/>
- Ask a librarian:  
<http://health.library.emory.edu/about/contact/ask.php>


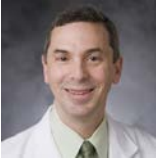

## Scottish Rite and Egleston Library Resources

- [Emily Lawson](#)  
Clinical Information Librarian, Inman Medical Library at Children's at Egleston  
404-785-1481
- [Kate Daniels](#)  
Clinical Information Librarian at Scottish Rite  
404-785-2157
- If you have access to [Careforce](#) — use the following link:  
<http://careforceconnection/Departments/HumanResources/Learning%20Services/LibrarServices/Pages/Home.aspx>
- If you do not have access to Careforce -- use the following link: <https://www.choa.org/medical-professionals/physician-resources/medical-libraries>

# Research Recruitment Update\*:

NAME	PHOTO	CENTER	TITLE	START DATE	RECRUITED FROM	RESEARCH INTERESTS
Stefan G. Sarafinos, PhD		Center for Drug Discovery	Acting Professor	September 2017	University of Missouri	<b>Research Interests</b> <ul style="list-style-type: none"> <li>• Biophysics</li> <li>• Cancer Biology</li> <li>• HIV/ AIDS</li> <li>• Molecular Evolution</li> <li>• RNA Biology</li> <li>• Structural Biology</li> <li>• Biochemistry</li> <li>• Virology</li> </ul>
Joshua Chandler, PhD		Center for Cystic Fibrosis and Airways Disease Research (CF-AIR)	Assistant Professor	August 2017	Emory University	<p>My research focuses on the diverging roles of oxidants generated during airway inflammation, particularly from neutrophils, and how shifts in the abundance of one oxidant at the expense of others drive changes in biological and health outcomes (such as altered epithelial cell signaling and improved patient lung function). I call this approach, which is complementary to but different from antioxidant intervention, "oxidant switching". Using clinical, animal, cellular and biochemical methods, I seek to identify redox-selective targets to promote resolution of inflammation and healthy lung tissue behavior. My major disease focus is cystic fibrosis (CF), in which excessive neutrophils in the airways heavily contribute to disease progression. However, I believe my research will also benefit patients with other inflammatory lung diseases, such as COPD and asthma, by identifying and targeting central redox-mediated pathways of resolving inflammation through oxidant switching.</p>

# Research Recruitment Update\*:

NAME	PHOTO	CENTER	TITLE	START DATE	RECRUITED FROM	RESEARCH INTERESTS
Amy Y. Tang, MD		Aflac Cancer and Blood Disorders Center	Assistant Professor	July 2017	Columbia University, NY, NY	Dr. Tang is interested in iron overload and chelation therapy in sickle cell disease and will initially join an ongoing industry-funded study of oral deferisirox in chronically transfused thalassemia patients. In addition to sickle cell patients, many other transfusion-dependent patients with hematological disorders, marrow failure syndromes, cancer, and bone marrow transplant are affected by iron overload and require chelation. Development of new approaches to transfusion, such as erythrocytapheresis, hold promise for improving transfusion outcomes and reducing iron overload. Dr. Tang also has research experience in basic science studies of RBC alloimmunization, and will contribute to ongoing clinical and translational studies here in that area.
Dan Wechsler, MD, PhD		Aflac Cancer and Blood Disorders Center	Professor, Director of Oncology	July 2017	Duke University Medical Center	<p>Areas of Research Interest:</p> <ul style="list-style-type: none"> <li>• Molecular Biology of Neuroblastoma</li> <li>• Regulation of Transcription of MYC family proteins</li> <li>• Role of Endocytosis in Pathogenesis of Acute Myeloid Leukemia</li> <li>• Pathogenesis of MLL-dependent Acute Leukemia</li> <li>• Nuclear Export Signals in Leukemogenesis</li> </ul>
Jocelyn Grunwell, MD		Center for Cystic Fibrosis and Airways Disease Research (CF-AIR)	Assistant Professor	July 2017	Emory University	I am interested in the role of AM immune phenotype, oxidative stress, cellular energy metabolism in pediatric acute lung injury. Understanding the mechanisms that underlie AM phenotype will hopefully allow us to modulate the immune system, the antioxidant enzymatic response system, and energy metabolism in critically ill children.